

MARKETPLACE: ENDODONTICS

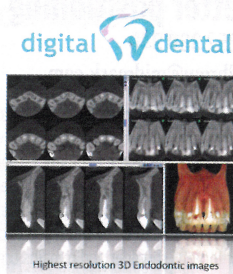
DIGITAL DENTAL

www.digitaldental.co.uk

Digital Dental offers the complete Promax 3D family from Planmeca. This includes a new imaging mode specifically for endodontic diagnosis. This imaging extends dentists' capabilities with the latest advances in cone beam technology.

It's not restricted to implant planning - viewing anatomical features in three dimensions is a great advantage to use for complex cases. This includes assessment of endodontic treatment complications, diagnosis of periapical pathology, root canal system anomalies, root curvature, precise measurements and the determination of exact root apex location in pre-surgical planning are just some of its uses.

The Planmeca Promax 3D family delivers focused, noise-free, high resolution 3D volumes for endodontic and periodontal imaging. This includes new ultra-low dose modes for orthodontic, surgical and post-treatment planning and new multiple small volume imaging for implant planning. It is cost-effective and ideal for any specialist or multi-disciplinary practice.



ENDOCARE

020 7224 0999

www.endocare.co.uk

EndoCare

Getting to the root of dental pain



Endocare understands the real value of a tooth. That's why it is dedicated to endodontics - fighting dental pain and infection and saving patients' natural teeth.

Its team of talented and experienced endodontists are experts in their field and it's wholly committed to providing high quality treatments and outstanding levels of patient care. Endocare welcomes contact from all referring practices and it is ready and willing to assist in any matter relating to endodontic treatment. Endocare excels at treating nervous or anxious patients and other challenging issues such as hot pulp, microsurgery and retreatments. Not only is Endocare's team of endodontists trained, but it's equipped with the latest technology to ensure patients receive the best care. This includes cutting edge digital imaging systems, nickel titanium instruments and the Wand to offer more comfortable injections.

FILHOL

info@filhol.com

www.filhol.com

Filhol Dental products are design-engineered to be faster, easier, safer to use. They are pure (99.8%) titanium, biocompatible and compatible with all dental materials.

Filpin (retention pin) is easily bent to suit restoration without breaking it or the tooth. The special thread design maximises retention strength without causing internal stresses.

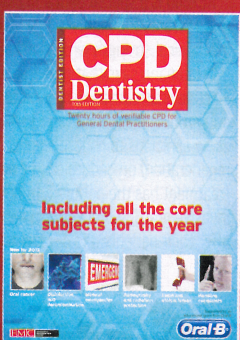
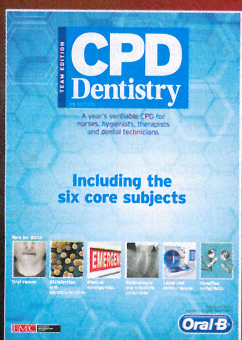
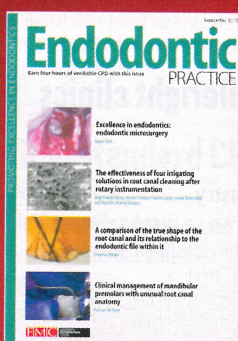
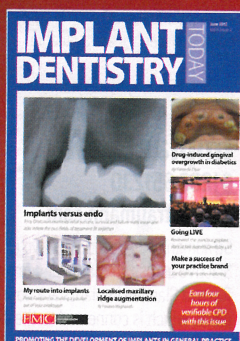
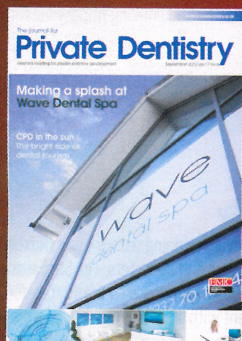
Filpost (root canal post) preserves more healthy tooth structure and is stronger in use due to its special passive interlocking system.

It's easily customised to suit the canal without risk of fracture, enabling easy insertion of multiple posts. No drilling is required during placement due to the 'universal groover' that minimises dentine removal. It creates a special passive interlock that strengthens retention.



SHARPEN YOUR SKILLS WITH THE UK'S LEADING JOURNALS!

Achieve your annual CPD requirements with the UK's leading seminar and journal provider



To subscribe CALL 0800 371652 or VISIT www.fmc.co.uk

FMC DENTISTRY'S INFORMATION CENTRE

GC UK

01908 218 999

GC G-cem Linkace is a dual-cure self-adhesive universal resin cement delivered in a double barrel automix syringe.

The product is designed for the adhesive luting of all ceramic, metal or composite indirect restorations. Offering the highest polymerisation in self-cure mode, G-cem Linkace ensures ideal results, regardless of the type of prosthetic material that is being cemented. GC UK says the proprietary phosphate monomers of G-cem Linkace guarantees an unsurpassed bonding durability. The high wear resistance and colour stability give peace of mind when luting CAD-CAM and metal free restorations. Some of the advantages of GC G-cem Linkace are:

- It's an efficient self-curing mode
- It's an excellent bonding property to all modern restorative materials
- GC G-cem Linkace has a high bond strength to dentine and enamel in both self-cure and dual-cure modes
- There's no need for preconditioning on the tooth structure
- The product releases fluoride for additional security
- There's no postoperative sensitivity
- GC G-cem Linkace has excellent colour stability
- It has the 'lowest' linear expansion
- GC G-cem Linkace has adequate radiopacity
- There is no need for refrigeration.



QUDENT

01903 211737

sales@qudent.co.uk

www.qudent.co.uk



Qudent are the main agents for Woodpex products who have two apex locators in its range; the Woodpex I and the Woodpex III.

Both models are table-top, precise measuring devices with clear colour LCD display screen and audible signals. The measurement is not affected by the environment - for instance, in wet or dry canals the products are a real benefit to the user.

However the Woodpex III has a larger LCD and a more advanced program. It has a rechargeable lithium battery. Both products come complete with two lip hooks, four reamer holders and are available through Qudent directly or Qudent's approved distributors. They are competitively priced at £249 and £299 + VAT and maybe subject to special offers.

For more information on the Woodpex units, please visit Qudent's website on, contact the Qudent team.